

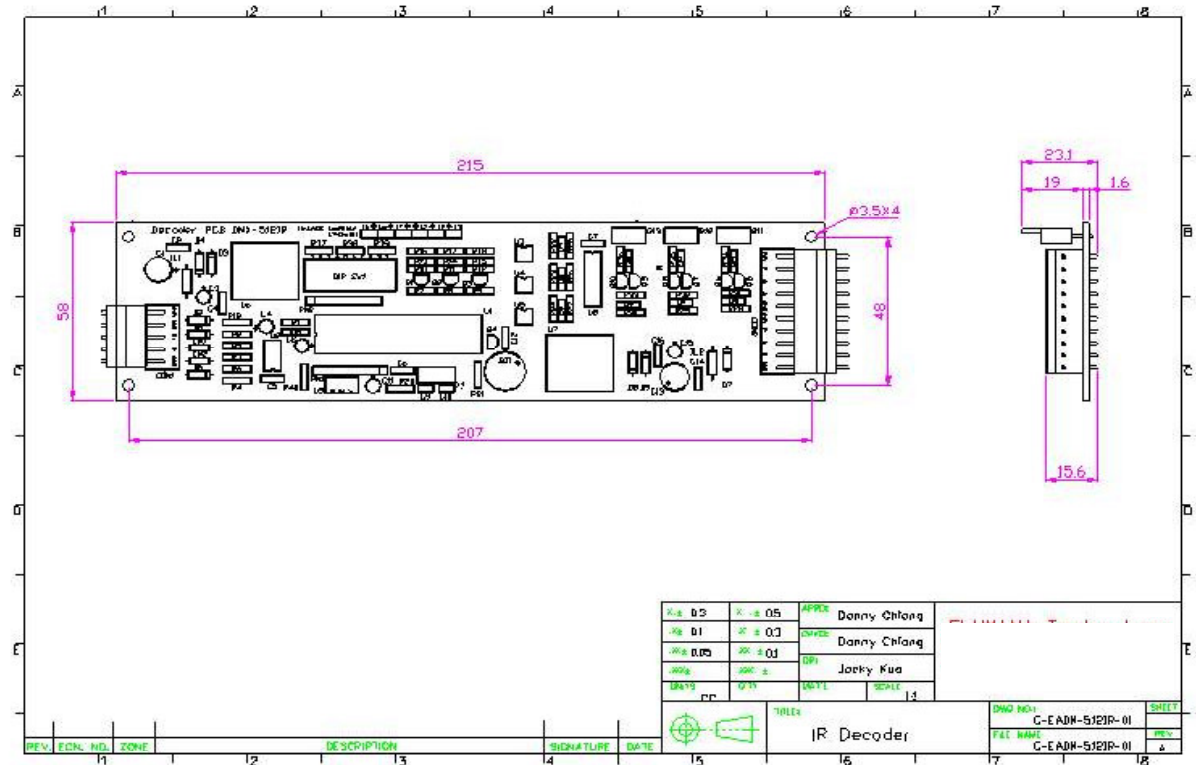


A: Specifications

Characteristics	
Model Number	EACM-DDR-12-S30
Working Voltage	DC24V
Function	512 Control Channels Setting and IR Control for 3 type dimmer
Output Voltage	DC24V
Output Signal	2 Section RGB Output
Size(LxWxH)	215mmx58mmx23mm
Operating Temp.	0°C ~ +50°C
Storage Temp.	-10°C ~ +60°C
Terminal Block	A. DC24V/DMX 512 Signal D+D- B. DC24V/RGB Output 2 sections
Accessories	1. Output Cable P/N: 911306000002 2464 24AWG 300mm 5PIN Male For Decoder to Light bar (Decoder Output) 2. DMX Data Cable Input P/N: 911303XX 2464 24 AWG Gauge for Runs up to 1000m 3PIN For DMX to Decoder



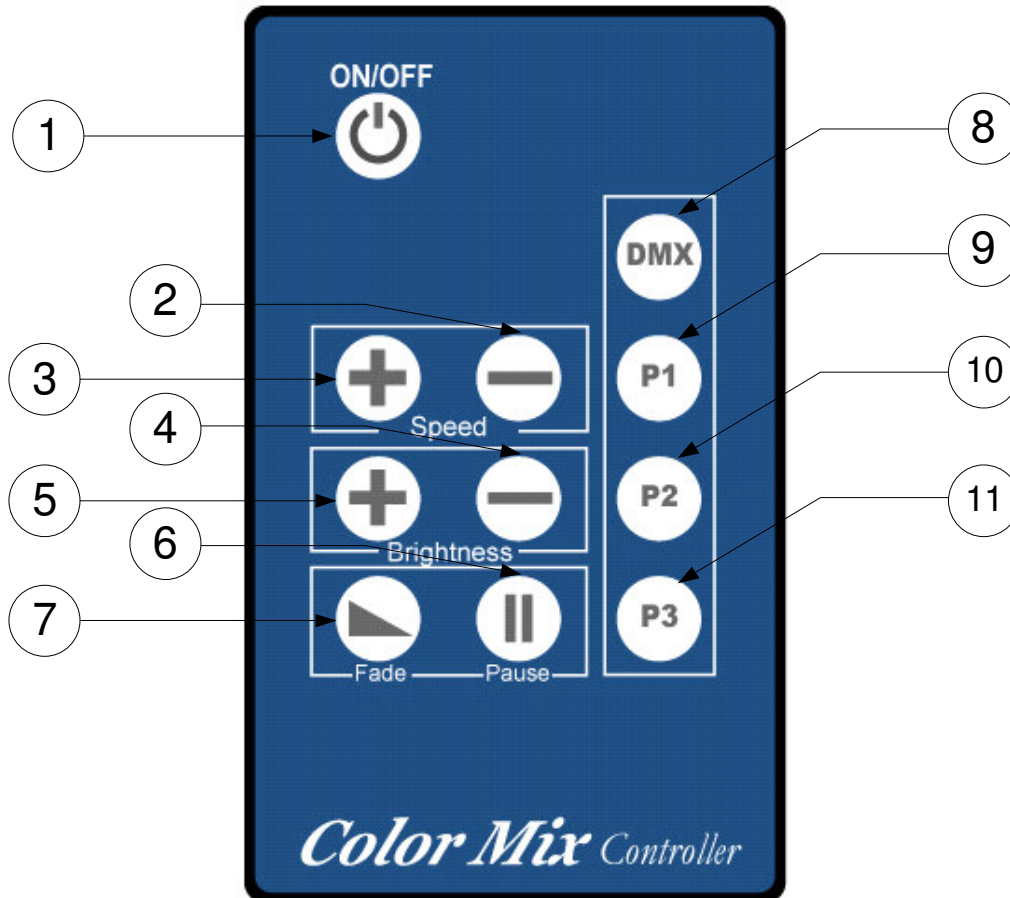
B: IR Decoder PCB Dimension(mm)



C: PCB Pin Out Definition:

Connector	Pin Out	Definition
1. Terminal Block x 5pin	+24V	Power In +24V
	GND	Power In 24V GND
	D+	DMX + Input
	D-	DMX - Input
	GND	DMX GND
2. Terminal Block x 10pin	+24V	Signal Output +24V
	R	Signal Output Red
	G	Signal Output Green
	B	Signal Output Blue
	GND	Signal Output GND
	+24V	Signal Output +24V
	R	Signal Output Red
	G	Signal Output Green
	B	Signal Output Blue
GND	Signal Output GND	

D:IR Unit Panel and Instructions



1. **ON/OFF** Controlling the Controller's Power On/Off
2. **Speed -** Adjustment of the Lighting Speed (-: decrease)
3. **Speed +** Adjustment of the Lighting Speed (+: increase)
4. **Brightness -** Adjustment of the Light's Brightness (-: decrease)
5. **Brightness +** Adjustment of the Light's Brightness (+: increase)
6. **Pause** Pausing the Operating Program On/Off
7. **Fade** Fading the Lighting in Circle On/Off
8. **DMX - DMX 512** Controlling the Outer DMX Signal In On/Off (a)
9. **P1** Programming the Interior Setting Program 1 On/Off
10. **P2** Programming the Interior Setting Program 2 On/Off
11. **P3** Programming the Interior Setting Program 3 On/Off

(a) This controller can accept the outer DMX512 signal in to control as you like. You just need to connect your DMX controller with our color mix controller together. Then "DMX" bottom can help you to make decision whether you want to use the outer DMX signal or not.